

Figure 4 - Satellite / WiFi Combo



The Pico-Grid controller can be locally accessed to monitor the status of the inputs and outputs of the controller. To set up, all you need is a device with WiFi. Please continue reading to learn more about how to set up your system using your mobile device.



# Pico-Grid Controller Installation

- ① **Turn ON:** Pull the tag to remove the red plastic jumper located on the right side of the Solar port to turn ON the device.
- ② **PoE Device Connection:** Select a PoE output port on the controller suitable for your device's voltage needs. Connect your PoE-compatible device to this port using an Ethernet cable.
- ③ **Network Link:** Use another Ethernet cable to connect the controller's second port to your network switch or router for data transfer.
- ④ **Solar Input:** Connect the solar panel to the controller using the provided solar panel connectors. Ensure a secure connection on the solar input.
- ⑤ **Monitor:** Connect to Pico-Grid with your mobile device.
  - a. Scan the Connect QR code with a scanner app on your smartphone. Follow the prompts on your device to connect to the controller's Wi-Fi network. You can also connect manually to the controller, the WiFi name and password can be found on the label near the connectors.
  - b. Open your browser and go to "<https://192.168.4.1>" or scan the Monitor QR Code (Figure 3) to open the web application. Here you can monitor power and configure the controller when connected to the controller.
- ⑥ **Commision:** After connecting via Wi-Fi Direct, open the web application
  - a. Within the web application. An "Install" button will be located at the top left.
  - b. Locate the admin password on the controller, below the WiFi Password. Enter this password to proceed.
    - Voltage Selection: Choose the appropriate voltage for connected devices.
    - Power Management: Enable or disable power on required PoE ports.
    - Wi-Fi Configuration: Configure the device to connect to the local Wi-Fi network and add additional information.
    - System Scan: Run the scanning tool to check if all components are functioning correctly and if the setup is optimal.

**All set! You can now disconnect from the Pico-Grid WiFi.**

# Pico-Grid Controller Port Ratings/Figures

## Port Ratings

Port	Voltage	Wattage
PoE Load 1	24V or 48V (Linked between PoE 1 and DC Port 1)	24W@24V or 48W@48V (PoE & DC Port Combined)
DC Out 1	PoE is Passive	
PoE Load 2	12V or 24V (Linked between PoE 2 and DC Port 2)	12W@12V or 24W@24V (PoE & DC Port Combined)
DC Out 2	PoE is Passive	
I/O	7.1V Max	100W Max
Solar	39V Max	200W Max

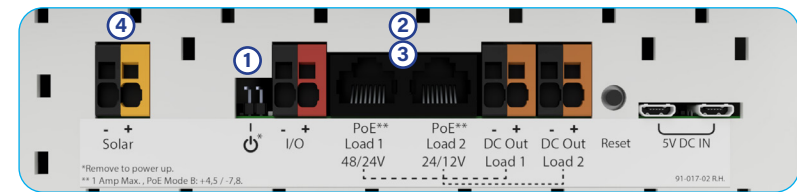


Figure 1 - Port Connections

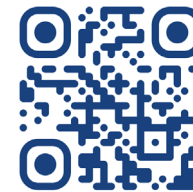


Figure 3  
Monitor QR Code

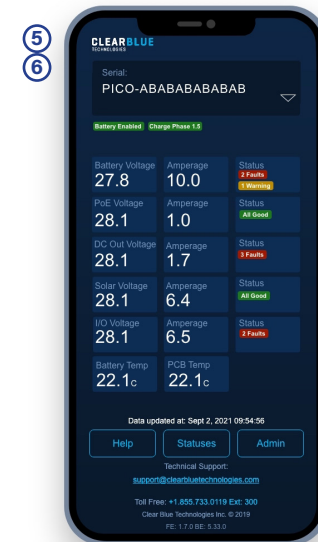


Figure 2 - Mobile Monitoring